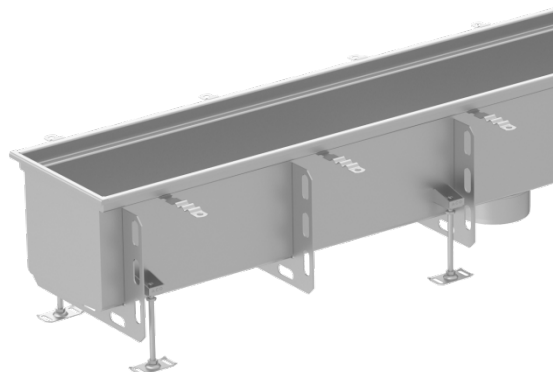


ACO extra deep hygienic box channel

Product information

The new extra deep hygienic channel design provides extended flow rates and higher retention capacities than existing channel solutions, making it perfect for use in breweries, soft drinks manufacturing facilities and any application which has to process high volumes of water. Available as a bespoke engineered solution, ACO's extra-deep channel is available in depths of up to 360mm.



Product information

- Made from stainless steel grades 1.4301 (AISI 304) or 1.4404 (AISI 316)
- Hygienic design following EN 1672, EN ISO 14159 and EHEDG document No. 8, 13 and 44
 - Fully drainable
 - Internal radii equal or larger than 3 mm
 - Hygienic joints
 - Edge infill
 - Fully removable and easily cleanable stainless steel foul air trap (FAT)
 - Fully pickled and passivated
- Tested and certified according to EN 1253
- Durable stainless steel levelling feet for quick and easy height adjustment
- Protective cover available.
- Wide range of gratings available
- Designed for resin and tiled floors

Technical details

Material	1.4301 (AISI 304)
	1.4404 (AISI 316)
Channel dimensions	Customizable via customization template or ACO configurator